
COLLECTION

| | | | |
|--------------------------|---------------|----|----|
| Stamoid Yacht Protection | Light | 38 | |
| | Easy | | |
| | Heavy Cover | | |
| | Top | | |
| General Plastic | Blossom | 42 | 37 |
| Irisun | Marine | 44 | |
| | Marine Plus | | |
| Sunbrella | Non resinato | 46 | |
| | Plus resinato | | |
| | Seamark | 50 | |

38 IT Questa collezione di Serge Ferrari è apprezzata da professionisti e skipper per la sua resistenza agli UV, per il suo design leggero e di facile manutenzione. I tessuti Stamoid sono impiegati per bimini top, coperture invernali, rivestimenti di sedili e attrezzature.

EN This collection of Serge Ferrari is appreciated by professionals and skippers for its resistance to UV, for its lightweight design and easy maintenance. Stamoid fabrics are used for bimini tops, winter covers, seat covers and equipment.



STAMOID YACHT PROTECTION

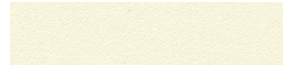
Light



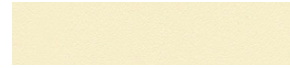
F4128-310309 Snow White



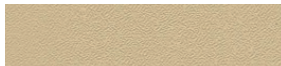
F4128-303244 White



F4128-310204 Cream



F4128-310081 Ivory



F4128-301897 Beige



F4128-320217 Desert *



F4128-320218 Cloud Grey



F4128-320165 Taupe



F4128-304997 Royal Blue



F4128-310235 Navy



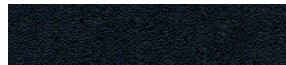
F4128-310001 Pearl Grey



F4128-10124 Silver *



F4128-320166 Anthracite



F4128-300002 Black

* disponibile anche in H 150 cm / also available in H 150 cm

Easy



F4748-03244 White



F4748-10081 Ivory



F4748-10001 Pearl Grey



F4748-04997 Royal Blue



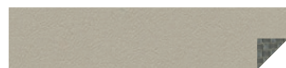
F4748-10235 Navy

39

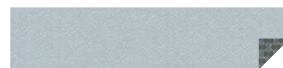
Heavy Cover



F4313-03244 White



F4313-01897 Beige



F4313-10001 Pearl Grey



F4313-20218 Cloud Grey



F4313-10235 Navy

Top



F3933-10309 Snow White



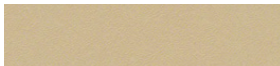
F3933-03244 White



F3933-10204 Cream



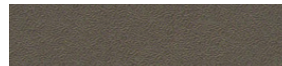
F3933-10081 Ivory



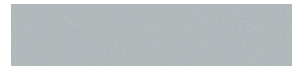
F3933-01897 Beige



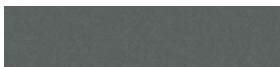
F3933-20217 Desert



F3933-20165 Taupe



F3933-10001 Pearl Grey



F3933-20218 Cloud Grey



F3933-20166 Anthracite



F3933-10235 Navy



F3933-00002 Black



F3933-04997 Royal Blue

| | | | | |
|---|--|---|--|---|
| Altezza Height | 150 · 260 cm 260 cm | Top Light, Easy, Heavy Cover | | |
| Peso totale Weight | 300 g/m ² 430 g/m ² 520 g/m ² | Light Easy, Top Heavy Cover | | |
| Composizione Composition | 1 lato PVC 2 lati PVC | Light, Easy, Heavy Cover Top | 1 side PVC 2 sides PVC | Light, Easy, Heavy Cover Top |
| Finissaggio Finishing | Resistenza ai raggi UV, 100% impermeabile, resistenza alle muffe ed allo sporco. | | Resistance to UV rays, 100% waterproof, resistant to mold and dirt. | |
| Utilizzo Applications | Light, Easy | Copertura pozzetto, tendalini, copertura invernale, copertura attrezzi, copertura tender. | Light, Easy | Cockpit cover, spray hood, sun awning, flybridge, winter cover, coverage tools. |
| | Heavy Cover | Copertura pozzetto, tendalini, copertura invernale, copertura attrezzi, copertura tender. | Heavy Cover | Cockpit cover, awnings, winter cover, tool cover, tender cover. |
| | Top | Cappottine, copertura invernale. | Top | Hoods, winter cover. |
| Cura e pulizia Care and cleaning | Lavare con acqua e sapone neutro. Non utilizzare alcun detergente aggressivo. Una volta lavato, far asciugare bene all'aria aperta. Non riporre il telo umido. | | Wash with water and neutral soap. Do not use any aggressive detergent. Once washed let it dry well in the open air. Do not store the damp cloth. | |
| Note Notes | Le caratteristiche tecniche indicate sono valori medi forniti a titolo indicativo e sono soggette a variazioni. I dati relativi alla lunghezza dei rotoli sono approssimativi e possono variare in base alle esigenze di produzione. I colori utilizzati sono puramente indicativi e non vincolanti. | | The technical characteristics mentioned are average values given as a guide and are subject to change. Roll length data are approximate and may vary depending on manufacturing requirements. The colours used are purely indicative and not binding | |