

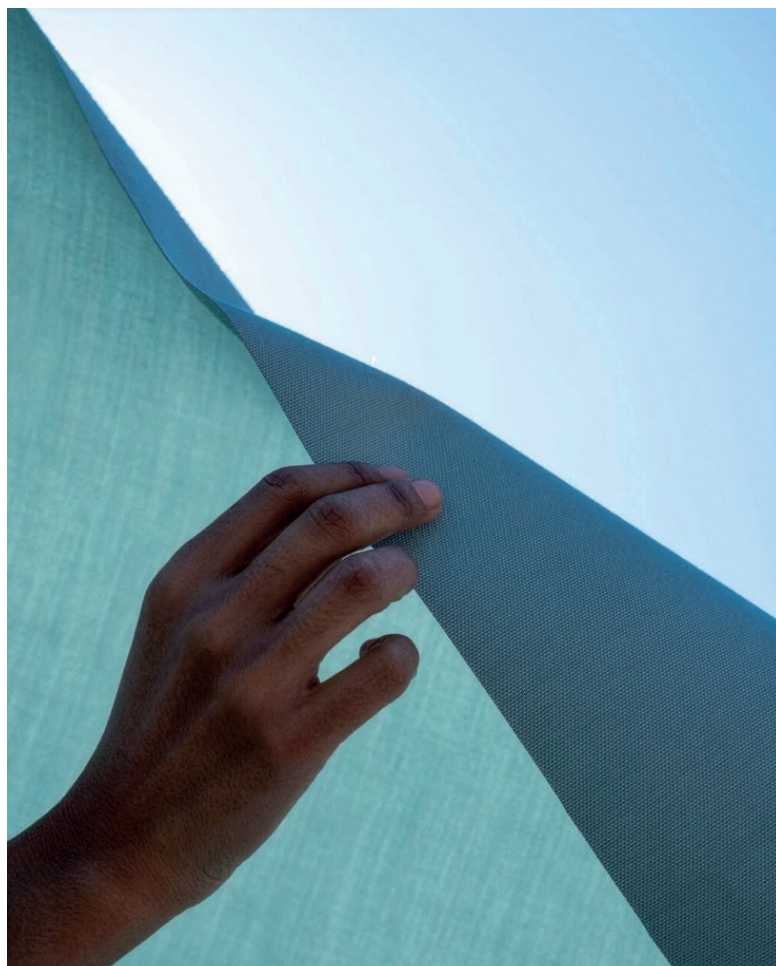
IT Il tessuto Sunbrella® Marine è concepito per le fodere di vele, winch e realizzazione dei tendalini. È realizzato con fibre acriliche tinte in massa ed è sottoposto ad un trattamento che conferisce alla tela una resistenza ottimale contro le macchie, le tracce di grasso e l'acqua.

Sunbrella® Plus è la versione resinata per la protezione delle imbarcazioni e dei loro equipaggi in condizioni estreme. Sunbrella® Plus offre una resistenza all'acqua tre volte superiore a quella di New Sunbrella® e garantisce una maggiore resistenza alle muffe, grazie al trattamento antimicotico specialmente formulato per un utilizzo in ambiente marino

46

EN The Sunbrella® Marine is designed for liners sails, winches and construction of awnings. It's made with fiber-dyed acrylic. Sunbrella® is subjected to a treatment that gives the canvas optimum resistance against stains, grease and water.

Sunbrella® Plus version resin for the protection of boats and their crews in extreme conditions. Sunbrella® Plus provides a water resistance three times higher than that of New Sunbrella® and guarantees a greater resistance to mold, thanks to the antifungal treatment specially formulated for use in a marine environment.

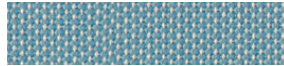


SUNBRELLA COLLECTIONS

Plus resinato



SUNT2 5020 152 Natural



SUNT2 P093 152 Fjord



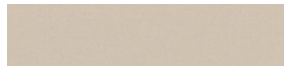
SUNT2 P023 152 Artic Blue



SUNT2 P052 152 Marble



SUNT2 5035 152 Silver



SUNT2 5030 152 Oyster



SUNT2 P057 152 Celestial



SUNT2 5031 152 Marine Blue



SUNT2 P080 152 Howlite



SUNT2 P053 152 Steel



SUNT2 P081 152 Moonstone



SUNT2 P088 152 Eucalyptus



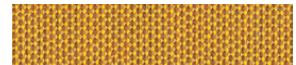
SUNT2 5057 152 Captain Navy



SUNT2 5530 152 Cadet Grey



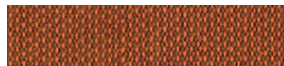
SUNT2 P079 152 Rock



SUNT2 P090 152 Sunset



SUNT2 P084 152 Rotala



SUNT2 P085 152 Gobi



SUNT2 P086 152 Sienna



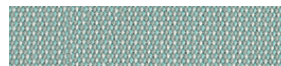
SUNT2 P015 152 Crimson Red



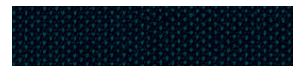
SUNT2 5034 152 Burgundy



SUNT2 P017 152 Flax



SUNT2 P092 152 Glacier



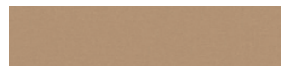
SUNT2 P083 152 Ocean



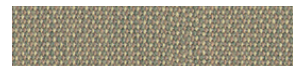
SUNT2 5049 152 Charcoal Grey



SUNT2 5087 152 Flanelle



SUNT2 5026 152 Dune



SUNT2 P087 152 Nile



SUNT2 P089 152 Como



SUNT2 P054 152 Titanium



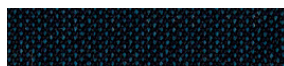
SUNT2 P078 152 Basalt



SUNT2 P055 152 Papyrus



SUNT2 5085 152 Dark Smoke



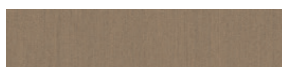
SUNT2 P082 152 Faroe



SUNT2 5082 152 Graphite



SUNT2 5088 152 Charcoal Piqué



SUNT2 5572 152 Heather Beige



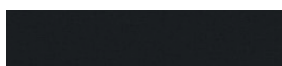
SUNT2 5548 152 Taupe



SUNT2 5058 152 Dark Navy



SUNT2 P091 152 Ebène Piqué



SUNT2 5032 152 Jet Black

Altezza Height	152 cm			
Peso totale Weight	300 g/m ²	Non resinato		
	320 g/m ²	Plus resinato		
Composizione Composition	100% Acrilico tinto in massa		100% Dyed acrylic	
Finissaggio Finishing	Non resinato	Trattamento speciale marino	Non resinato	Special marine treatment
	Plus resinato	Antimuffa, Trattamento UV	Plus resinato	Mold-resistant, UV treatment
Utilizzo Applications	Coperture nautiche, tendalini, bimini top, sprayhood, cappottine.		Nautical covers, awnings, bimini tops, sprayhoods, canopies.	
Cura e pulizia Care and cleaning	Lavare con acqua e sapone neutro. Non utilizzare alcun detergente aggressivo. Una volta lavato, far asciugare bene all'aria aperta.		Wash with water and neutral soap, Do not use any aggressive detergent. Once washed let it dry well in the open air.	
Garanzia Warranty	5 anni	Plus resinato	5 years	Plus resinato
	10 anni	Non resinato	10 years	Non resinato
Note Notes	Le caratteristiche tecniche indicate sono valori medi forniti a titolo indicativo e sono soggette a variazioni. I dati relativi alla lunghezza dei rotoli sono approssimativi e possono variare in base alle esigenze di produzione. I colori utilizzati sono puramente indicativi e non vincolanti.		The technical characteristics mentioned are average values given as a guide and are subject to change. Roll length data are approximate and may vary depending on manufacturing requirements. The colours used are purely indicative and not binding	